

FOUNTAIN at BERESFORD GAP



The fountain at the head of Beresford Gap is not shown on a detailed map dated c. 1920, but it was clearly installed by 1931, when a series of aerial photos was taken along the north Thanet coast.

The panel on the south side of the structure reads -

**For public use
Please respect it**

The fountain is made of stone and has textured panels around an octagon. There are two hollows at the base from which dogs can drink, as well as two entries for pipe work on the north and south sides of the rim. There is a large hollow in the centre, which must have had some kind of covering at the top. Unfortunately this has gone and the hollow now holds quite a lot of rubbish.



Fountain in 1931 aerial
survey of the North Thanet
coast

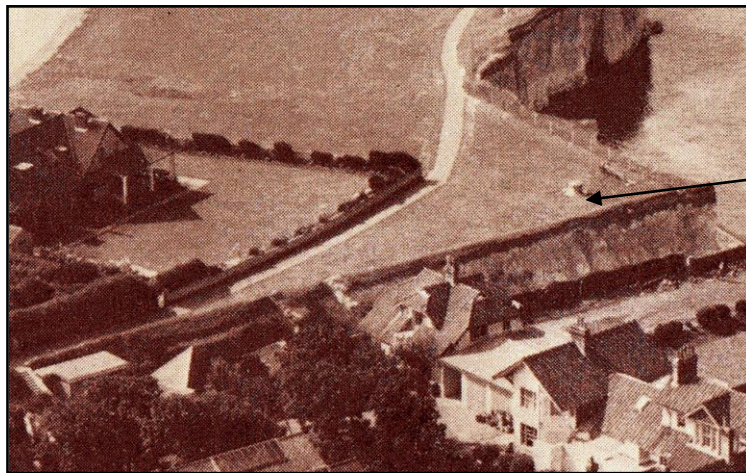


Bernard and Jean Beadle beside the fountain

1946



1997



Fountain 1950

It was suggested by Bernard Beadle that he thought he remembered there being some engraving round the insert in the top centre that gave indications for where each section of the north half of the plate was pointing – eg. North Pole or London etc - but this needs confirming.

Any further information on the fountain will be gratefully received in the Birchington Heritage Trust Museum in Room 4 of the Village Centre.