

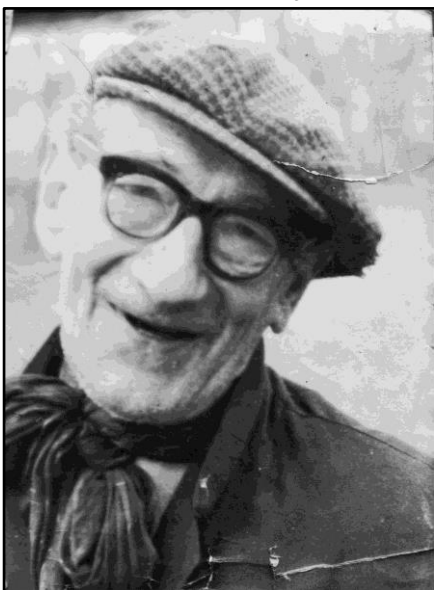
# 'OLD JOE' in 1977

'Old Joe' Brewer used to visit Ray Butcher and his wife in their shop at "Southdown", 207 Canterbury Road, which was a general store and sweet shop at the entrance to the Methodist church. He lived at 1 East End Terrace, just off the Canterbury Road (now re-numbered as 147 Canterbury Road).

Old Joe would sit on the chair in the shop and chat to Ray and his wife and their customers most days. When Ray's daughter Susan Wimbush saw the photo her dad had taken of Joe, she asked to borrow it and painted his portrait.



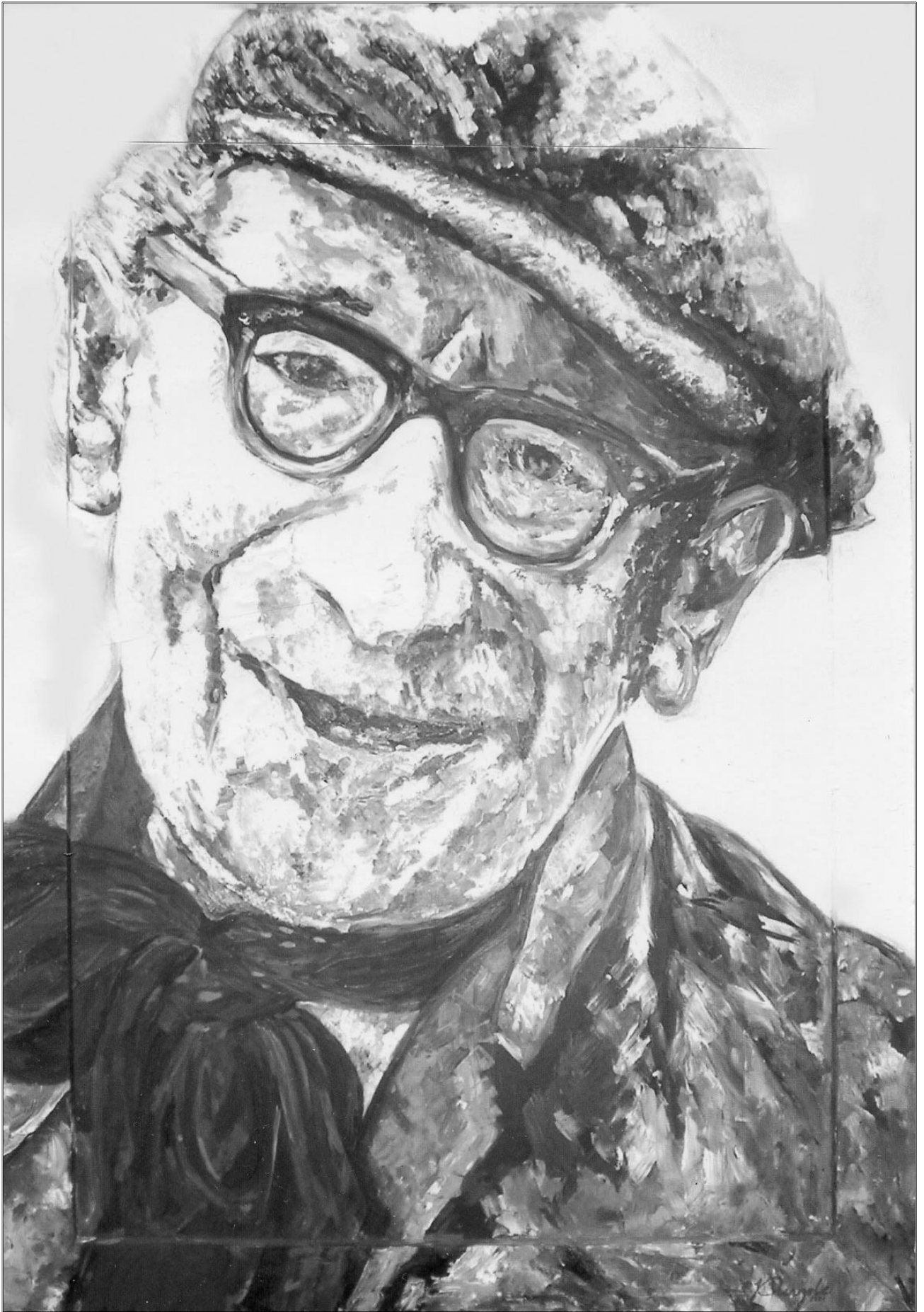
Ray eventually closed the shop but continued to live in the house. When he came to sell up and move to France, he gave us the large portrait of 'Old Joe', who had died some years previously.



*Original photo of Old Joe used to make the portrait*



Old Joe's house at 1 East End Terrace -  
now listed as 147 Canterbury Rd  
The extension came after Joe's time there



*Susan Wimbush's portrait of Old Joe*